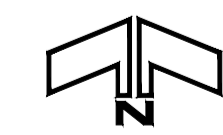
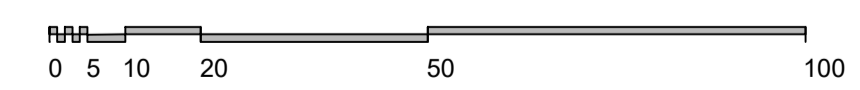
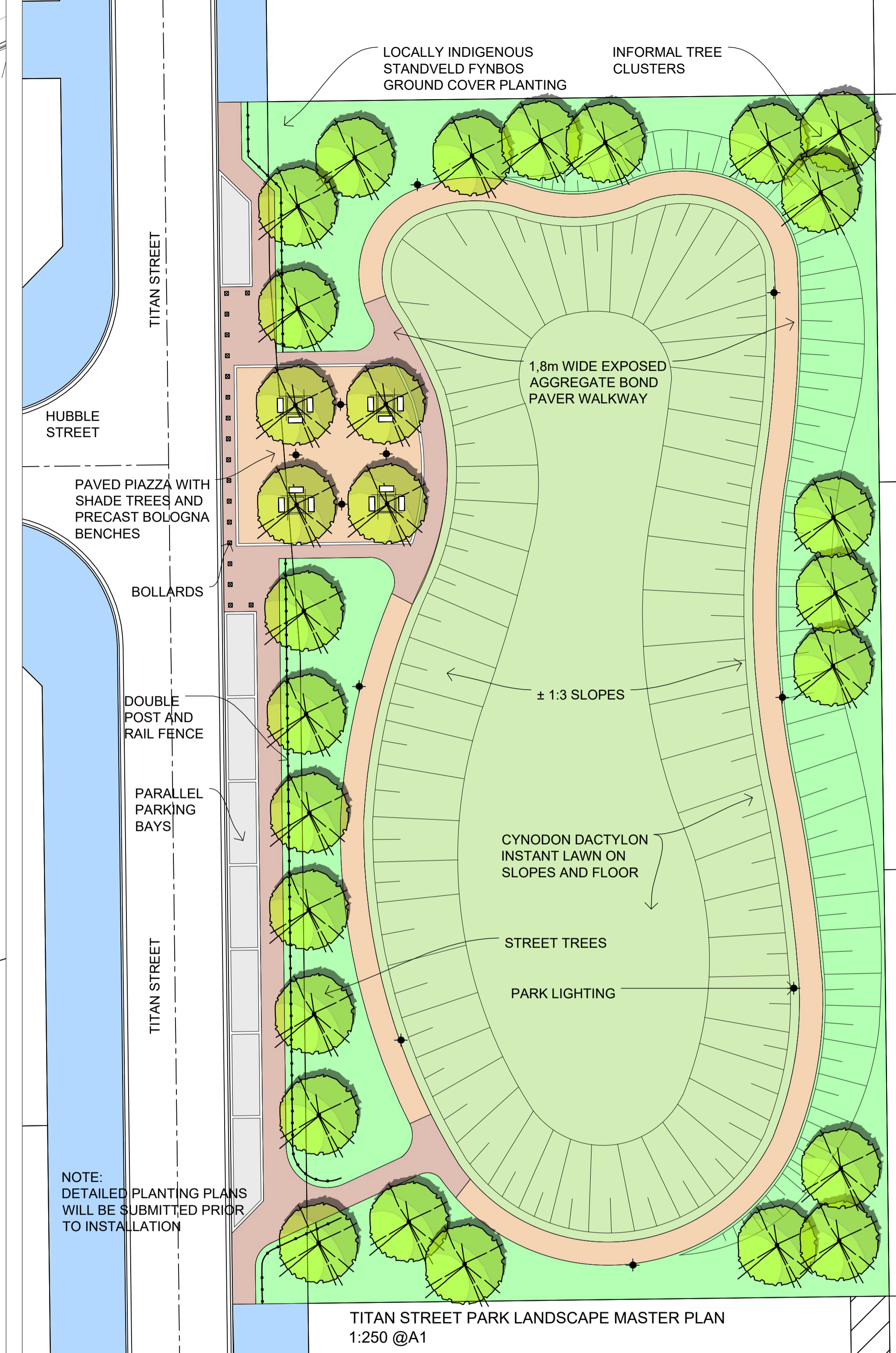


LANDSCAPE MASTER PLAN 1:1000 @A1



**LEGEND**

- TREATMENT OF RIVERGATE DRIVE AND ENTERPRIZE WAY VERGES AS PER APPROVED PLANNING PARTERS LANDSCAPE MASTER PLAN : RIVERGATE PHASE 2, DWG No 7834-PH2.001, FEB 2018
- LANDSCAPE AND IRRIGATION BY TOP STRUCTURE DEVELOPERS ACCORDING TO PLANT LIST IN RIVERGATE DESIGN GUIDELINES (MASTER PLANT LIST)
- TREATMENT OF FUTURE M12 VERGES AS PER APPROVED PLANNING PARTERS LANDSCAPE MASTER PLAN : M12 EXTENSION PHASE 1, DWG No 7834-M12-A-1, JAN 2018
- ORBIT STREET & MERCURY CIRCLE OUTER VERGE LANDSCAPING AND IRRIGATION (INCLUDING VISUALLY PERMEABLE FENCE AND LOW KICKER WALL) TO BE IMPLEMENTED BY MILNERTON ESTATES / ASKA JV (SIDEROXYLON INERME 100I, WITH CARPOBROTUS EDULIS CUTTINGS AS UNDER PLANTING)
- TITAN STREET DETENTION POND (AS PER DETAIL PLAN) TO BE IMPLEMENTED BY MILNERTON ESTATES / ASKA JV
- 1,5M WIDE BUILDING LINE TO BE LANDSCAPED BY THE TOP STRUCTURE DEVELOPER ACCORDING TO THE DESIGN GUIDELINES



TITAN STREET PARK LANDSCAPE MASTER PLAN  
1:250 @A1

NOTE:  
DETAILED PLANTING PLANS  
WILL BE SUBMITTED PRIOR  
TO INSTALLATION



NOTE:  
ALL PLANTING TO CONFORM TO RIVERGATE  
APPROVED PLANT LIST

**RIVERGATE PHASE 2  
ERF 184**

**LANDSCAPE MASTER PLAN**

JOB No. 7834E	DRAWING No. 7834E - LMP - 01	REVISION WYSIGING
DATE FEB 2019	FILE NAME R:\Projects\7834 Rivergate Phase 2\7834-Phase 2.dwg	
SCALE AS INDICATED @ A1		
DESIGNED OUTWERP JJ	DRAWN GETEMEN S.JD	DATE DATUM
CHECKED INGESTEN JJ	APPROVED OEGEBREUR JJ	
CLIENT ASKA / THE MILNERTON ESTATES (PTY) Ltd JV		

**PLANNING PARTERS  
BEPLANNINGSVENNOTE**

PLANNING PARTERS BEPLANNINGSVENNOTE  
Riviergatedreeplein 10, 7800 Milnerton, Kaapstad  
T: 021 551 1000 | F: 021 551 1001 | E: info@planningpartners.co.za  
© 2019 Planning Partners